

# *Spann & Associates*

## **Risk Tolerance Assessment**

**Prepared for:**

*Demo Sample*

- *This material is confidential and personal.*
- *Please do not read this report unless authorized to do so.*
- *The content should not be used as the sole source for decisions regarding hiring, placement, career moves or termination.*

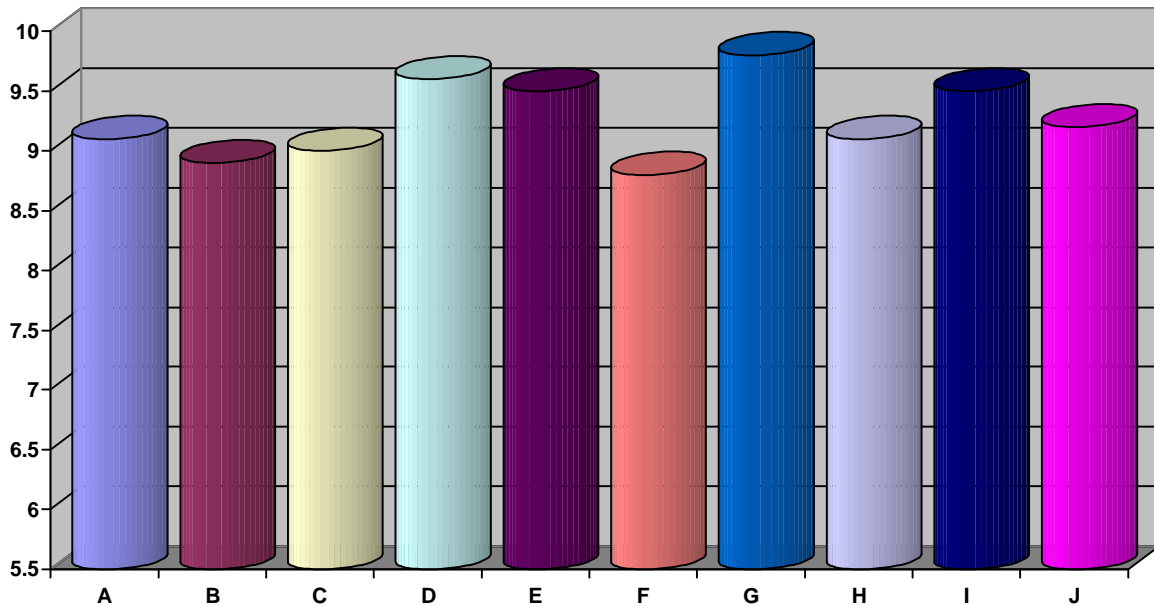
Mary Lou Spann, PhD  
Spann & Associates  
Minneapolis, MN  
Telephone: 763 755 5959  
Fax: 763 755 5959  
E-Mail: [mlspann@spannassoc.com](mailto:mlspann@spannassoc.com)  
Web: <http://www.spannassoc.com>

7AD9\_12450\_\*\_\* 1/26/2011 1:20:00 PM

**This entire document is subject to the following statement:**

**Copyright © 2002- 2011 – Axiometrics International, Inc. All rights reserved.**

## Risk Tolerance Assessment OVERVIEW GRAPH OF RISK ATTRIBUTES



<b>Low Risk</b> (Excellent ability to utilize the capacity and translate the talent into decisions; reduces the potential for errors and mistakes)	<b>8.8 to 10.0</b>
<b>Situational Risk</b> (Very good ability to utilize the capacity especially in well defined areas; however, there are specific situations that can interfere with the translation into decisions)	<b>8.5 to 8.79</b>
<b>Conditional Risk</b> (Limited access to the capacity indicating actual conditions that will increase the potential for mistakes and errors and restrict the transfer into decisions)	<b>8.2 to 8.49</b>
<b>Real Risk</b> (Restricted access to the capacity indicating the ability is consistently unavailable and individuals are subject to mistakes and errors in judgment)	<b>6.0 to 8.19</b>

<b>A) Understands The Difference Between Crisis Issues And Minor Problems. (Low Risk)</b>
<b>B) Does Not Jump To Conclusions To Make Fast Resolutions Of Problems. (Low Risk)</b>
<b>C) Plans For Situations When Things Do Not Work Out As Expected. (Low Risk)</b>
<b>D) Is Willing To Take Risks For What They Believe Is Right. (Low Risk)</b>
<b>E) Sticks By A Decision Once It Is Made. (Low Risk)</b>
<b>F) Is Open To Mistakes And Willing To Be Wrong And Change Directions. (Situational Risk)</b>
<b>G) Is Optimistic And Believes That Things Will Work Out For The Best. (Low Risk)</b>
<b>H) Makes Commitments That Are Realistic And Can Be Kept. (Low Risk)</b>
<b>I) Makes Decisions With Confidence. (Low Risk)</b>
<b>J) Knows When To Take Risks And Chances. (Low Risk)</b>

---

## ***Risk Tolerance Assessment***

### **TOP SEVEN CRITICAL SUCCESS SKILLS**

---

Listed below are your top seven Critical Success Competencies. These competencies are listed in order of the talent you currently display for paying attention to and valuing them. The first competency listed is your strongest and is followed by the rank order of the remainder of the competencies.

<b>Rank</b>	<b>Description</b>	<b>Strength/Development</b>
1	Is Optimistic And Believes That Things Will Work Out For The Best	Low Risk
2	Is Willing To Take Risks For What They Believe Is Right	Low Risk
3	Makes Decisions With Confidence	Low Risk
4	Sticks By A Decision Once It Is Made	Low Risk
5	Knows When To Take Risks And Chances	Situational Risk
6	Understands The Difference Between Crisis Issues And Minor Problems	Situational Risk
7	Makes Commitments That Are Realistic And Can Be Kept	Situational Risk

---

## ***Risk Tolerance Assessment***

### **THREE KEY DEVELOPMENT AREAS**

---

Listed below are your three key development areas from the Critical Success Competencies. These competencies are listed in order of the area which needs the most development followed by the other two in the order of their rank.

<b>Rank</b>	<b>Description</b>	<b>Strength/Development</b>
1	Is Not Always Open To Mistakes And Willing To Be Wrong And Change Directions	Conditional Risk
2	Tends To Jump To Conclusions To Make Fast Resolutions Of Problems	Conditional Risk
3	Does Not Always Plan For Situations When Things Do Not Work Out As Expected	Situational Risk

---

## **Risk Tolerance Assessment**

### **ATTITUDE INDICATORS**

---

<b>Attitude Toward:</b>	People	Practical Values	Rules Authority	The Future	The Present	Self Image
Positive Perfectionistic				ü		
Positive Subjective		ü				
Positive Reserved			ü		ü	
Positive Dynamic						ü
Cautious Reserved						
Unconventional						
Cautious Skeptical	ü					
Skeptical Suspicious						