

Spann & Associates

Professional Sports Scouting Report

Prepared for:

Demo Sample

- This material is confidential and personal.*
- Please do not read this report unless authorized to do so.*
- The content should not be used as the sole source for decisions regarding hiring, placement, career moves or termination.*

Mary Lou Spann, PhD
Spann & Associates
Minneapolis, MN
Telephone: 763 755 5959
Fax: 763 755 5959
E-Mail: mlspann@spannassoc.com
Web: <http://www.spannassoc.com>

7AD9_12450_*_* 1/26/2011 1:17:00 PM

This entire document is subject to the following statement:

Copyright © 2002- 2011 – Axiometrics International, Inc. All rights reserved.

Professional Sports Scouting Report **SUMMARY**

ATTITUDES:

- Individualist, does things their own way
- Optimistic about self and world
- Cautious, reserved attitude toward others
- Results, 'now' oriented attitude toward getting things done

PROBLEM SOLVING:

- Good intuitive insights, 'gut instincts'

SELF IMAGE:

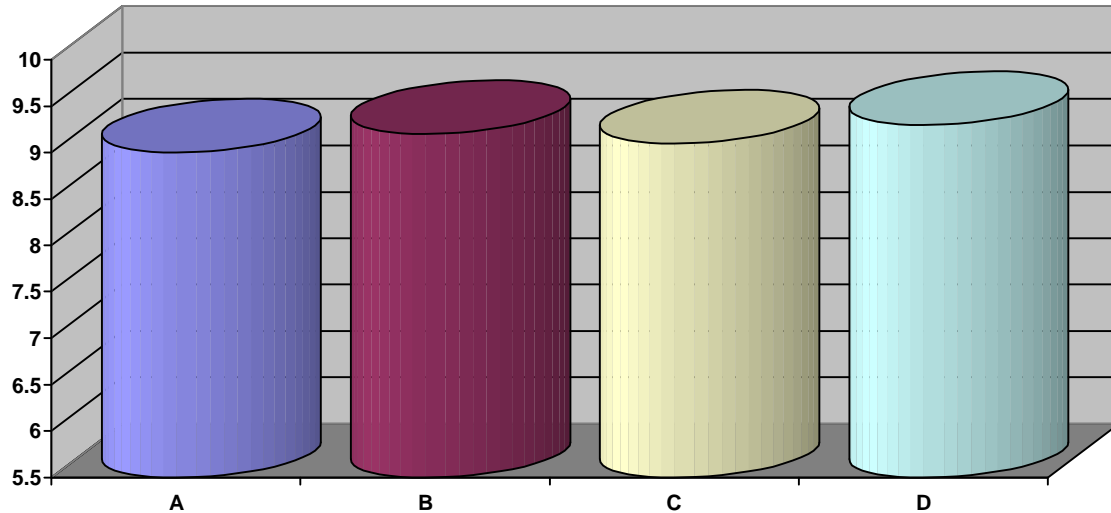
- No fear of failure or success
- Confident, self assured
- Inner directed, sees things their own way

MOTIVATORS:

- Results, getting things done
- Money, material things
- Status, recognition
- Sense of mission, personal goals

Professional Sports Scouting Report TEAM INDIVIDUAL SCORECARD

GLOBAL GRAPH



| | |
|---|--------------------|
| Low Risk (Excellent ability to utilize the capacity and translate the talent into decisions; reduces the potential for errors and mistakes) | 8.8 to 10.0 |
| Situational Risk (Very good ability to utilize the capacity especially in well defined areas; however, there are specific situations that can interfere with the translation into decisions) | 8.5 to 8.79 |
| Conditional Risk (Limited access to the capacity indicating actual conditions that will increase the potential for mistakes and errors and restrict the transfer into decisions) | 8.2 to 8.49 |
| Real Risk (Restricted access to the capacity indicating the ability is consistently unavailable and individuals are subject to mistakes and errors in judgment) | 6.0 to 8.19 |

| |
|--|
| A) Will They Fit Into The Organization (Low Risk) |
| B) How Well Can They Manage Themselves (Low Risk) |
| C) How Well Can They Think, Solve Problems, And Make Decisions (Low Risk) |
| D) Can They Lead (Low Risk) |

Professional Sports Scouting Report REPORT CARD

WILL THEY FIT INTO THE ORGANIZATION

| Attribute | Score |
|---------------------------|--------------|
| Attitude Toward Authority | C |
| Managing stress | F |

| | | |
|-----------------------------|-----------------------------|----------------------|
| C = Situational Risk | D = Conditional Risk | F = Real Risk |
|-----------------------------|-----------------------------|----------------------|